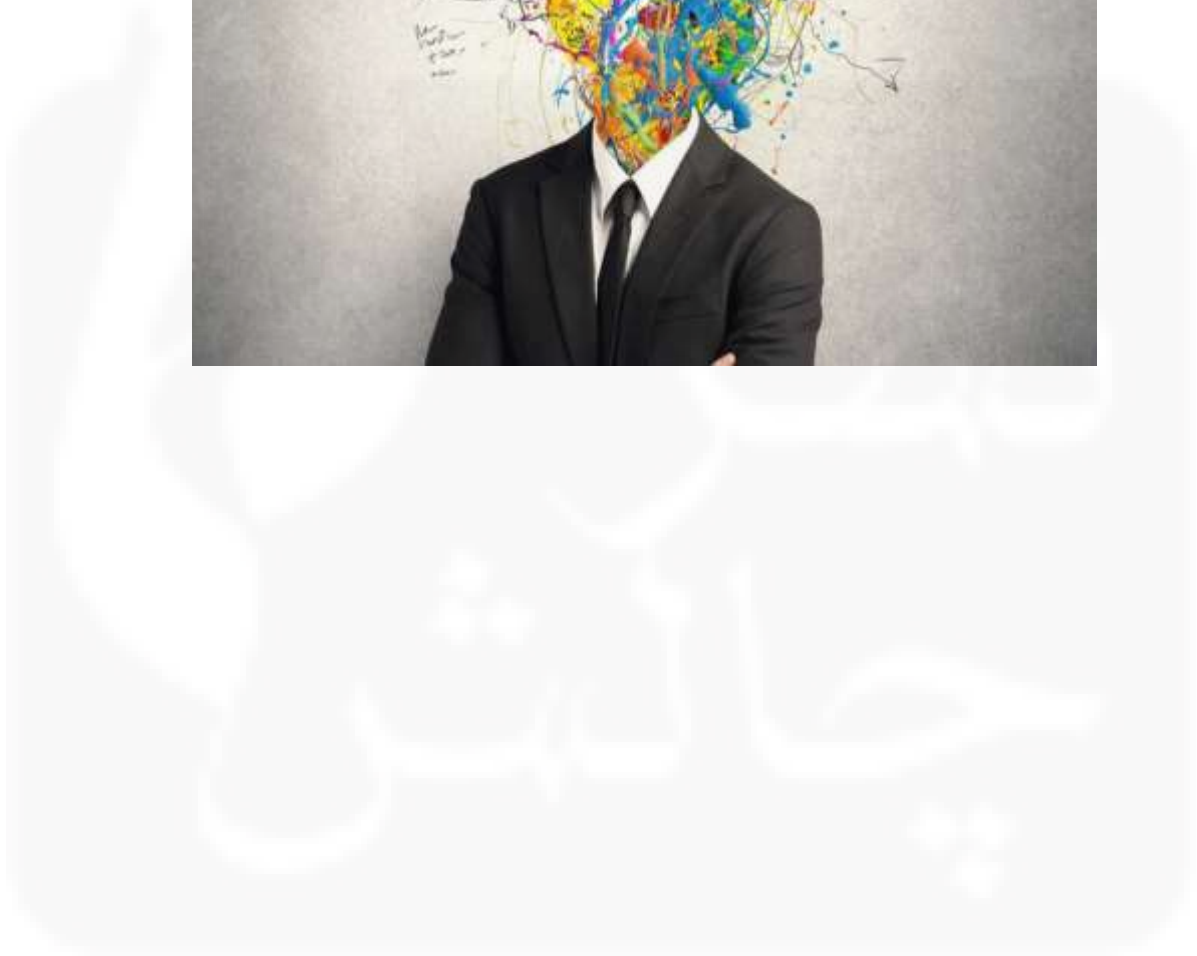
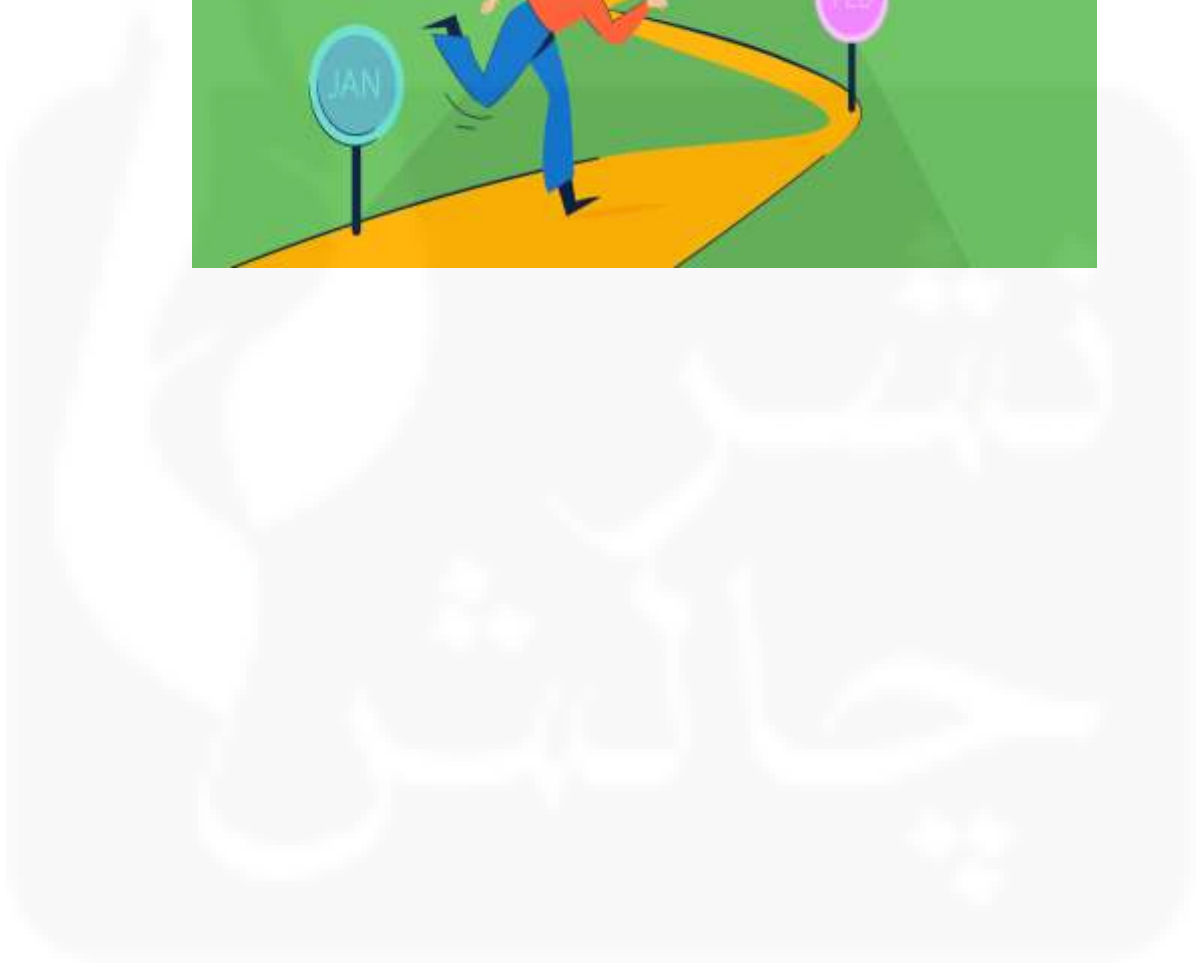


## فصل اول: روانشناسی



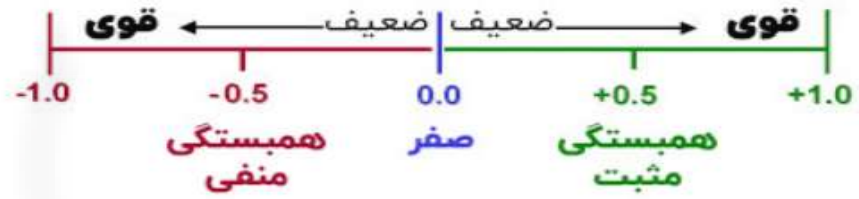




## فصل دوم: تحلیل بین بازاری

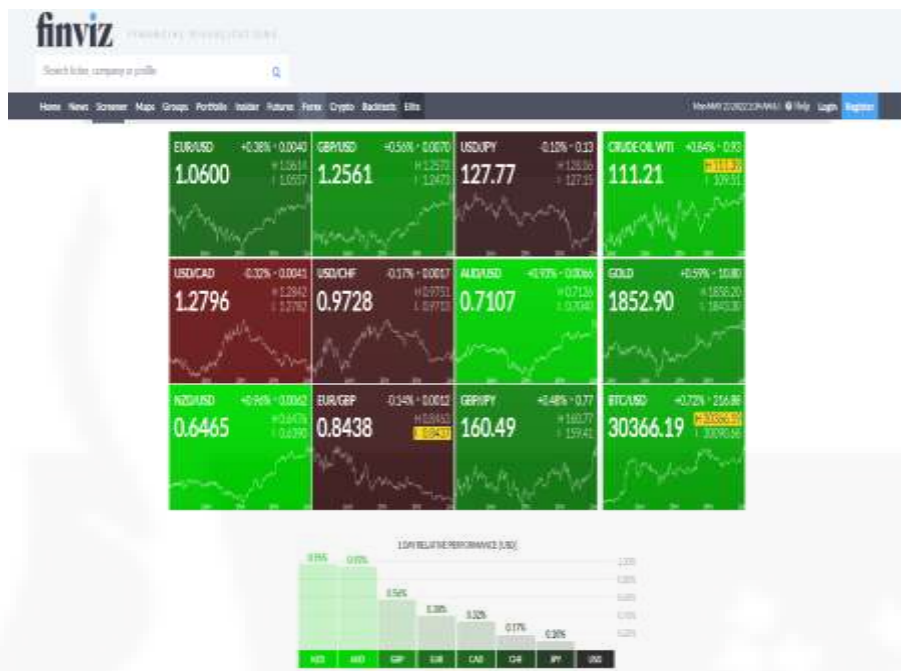


ضریب همبستگی  
 نشان‌دهنده قدرت و جهت همبستگی است

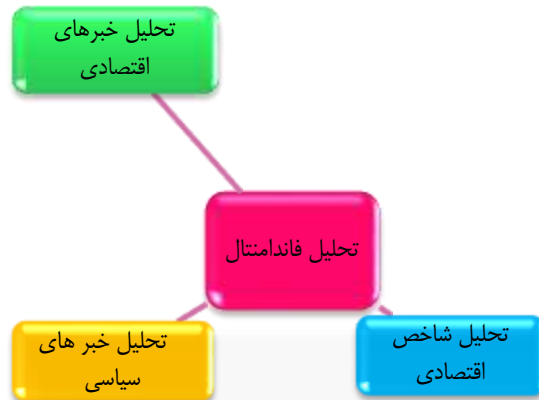


Date	Event	Time	Impact	Volatility	Correlation	Direction
Wed 18 Jun 18	Germany: An Economy Update	10:00	Low	Low	Low	Neutral
Thu 20 Jun 18	Monetary Policy Meeting Minutes	14:00	Low	Low	Low	Neutral
Thu 20 Jun 18	Monetary Policy Statement	14:30	Low	Low	Low	Neutral
Thu 20 Jun 18	ECB Press Conference	14:45	Low	Low	Low	Neutral
Thu 20 Jun 18	ECB: Major Rates Hike	15:00	High	High	High	Positive
Thu 20 Jun 18	Bank: Rate Hike	15:00	Low	Low	Low	Neutral
Wed 21 Jun 18	ECB: Policy	15:00	High	High	High	Positive
Wed 21 Jun 18	Monetary Policy	15:00	High	High	High	Positive
Wed 21 Jun 18	Forward: Policy	15:00	High	High	High	Positive
Wed 21 Jun 18	Forward: Policy	15:00	High	High	High	Positive
Wed 21 Jun 18	Forward: Policy	15:00	High	High	High	Positive
Wed 21 Jun 18	ECB: Consumer Confidence	15:00	Low	Low	Low	Neutral
Thu 21 Jun 18	Bank: Rate Hike	15:00	High	High	High	Positive
Thu 21 Jun 18	Unemployment Claims	16:00	Low	Low	Low	Neutral
Fri 22 Jun 18	GDP: Actual	10:00	High	High	High	Positive
Fri 22 Jun 18	Bank: Rate Hike: Hike	15:00	High	High	High	Positive

چالش



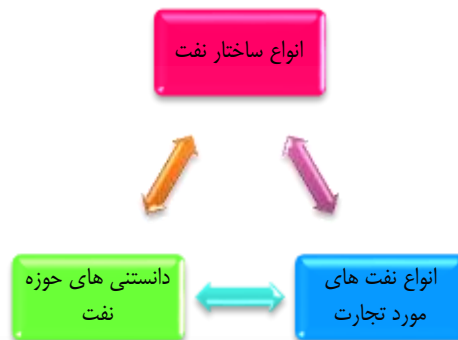
## فصل سوم: فاندامننتال

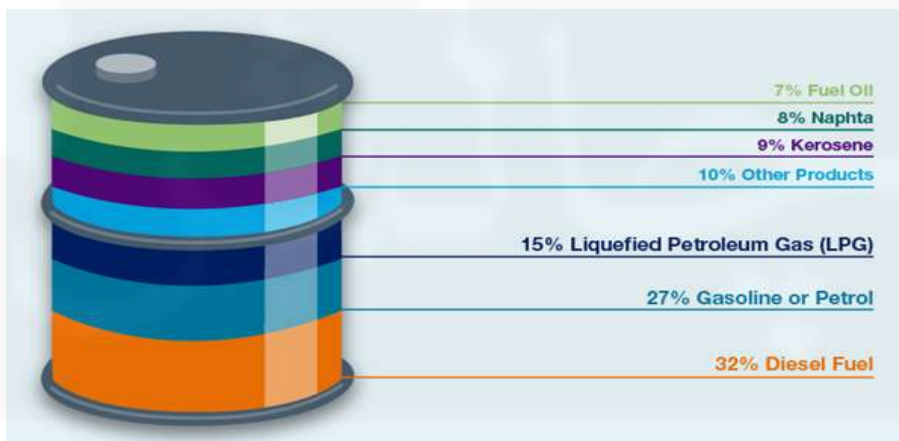






## فصل چهارم: نفت







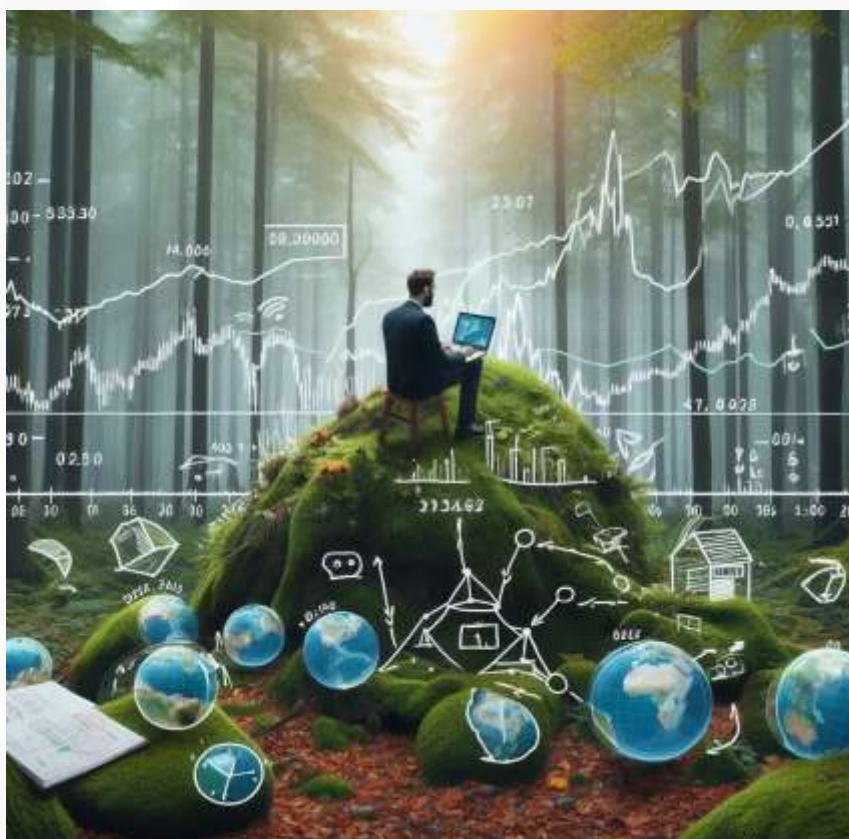
## فصل پنجم: طلا





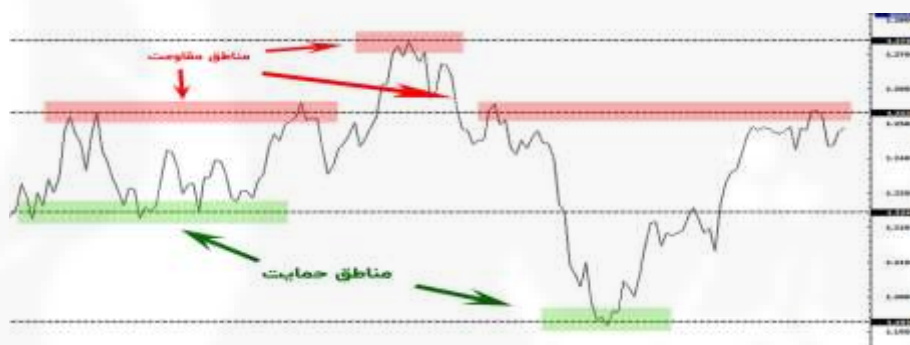
# چالش‌ها

فصل ششم: تکنیکال

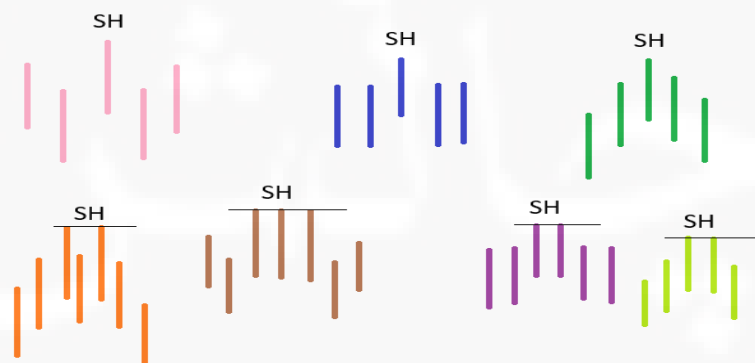




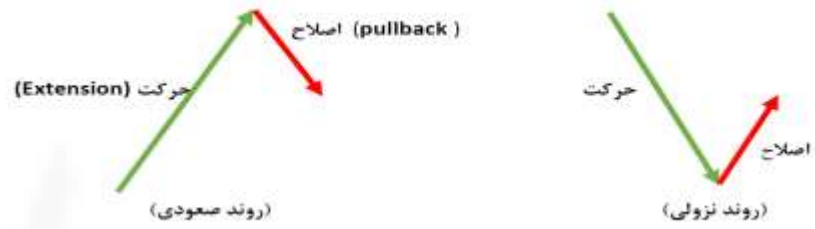
صفحه ۹۳



صفحه ۹۴

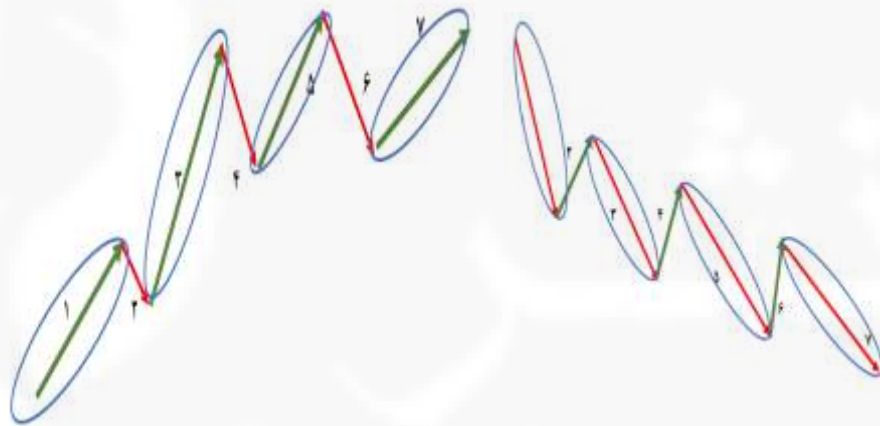


صفحه ۹۵



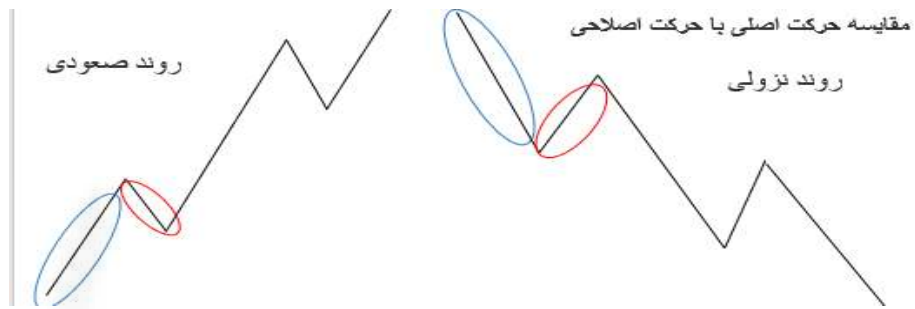
صفحه ۹۶

مقایسه حرکت های اصلی هم جهت

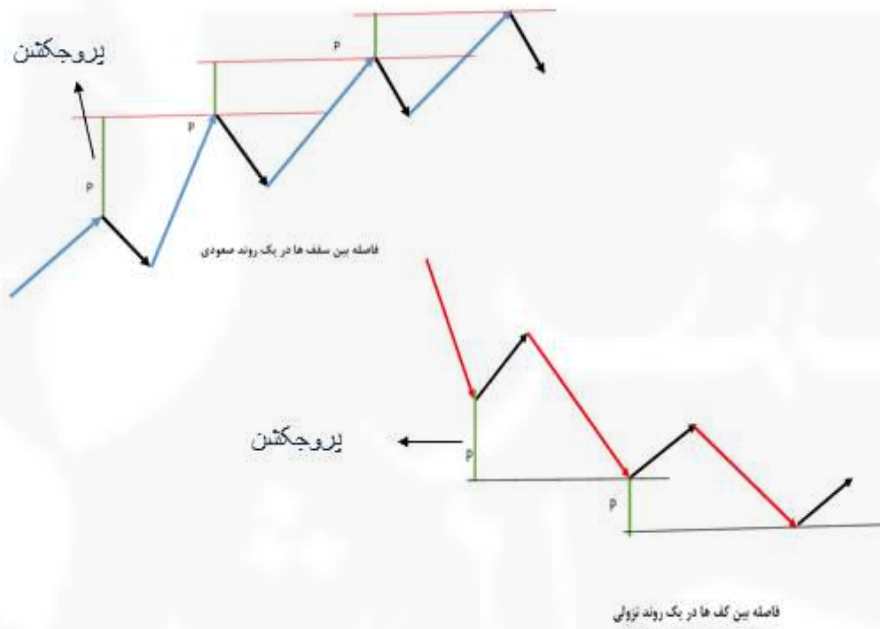


صفحه ۹۷





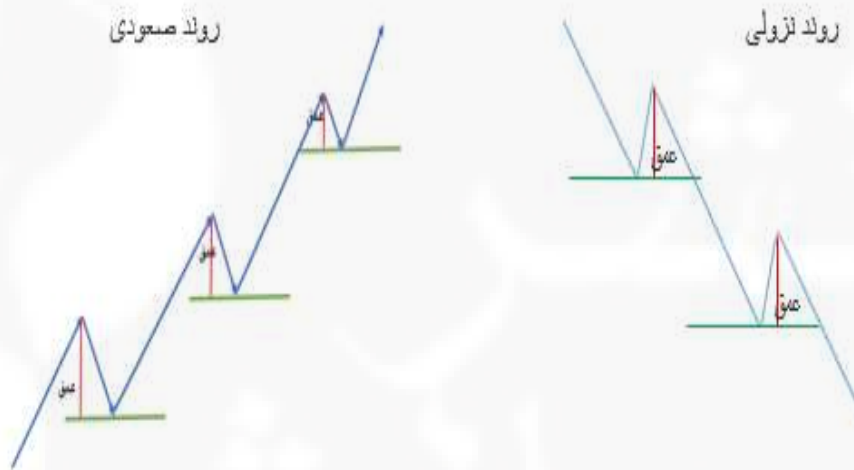
صفحه ۹۷



صفحه ۹۸



صفحه ۹۹

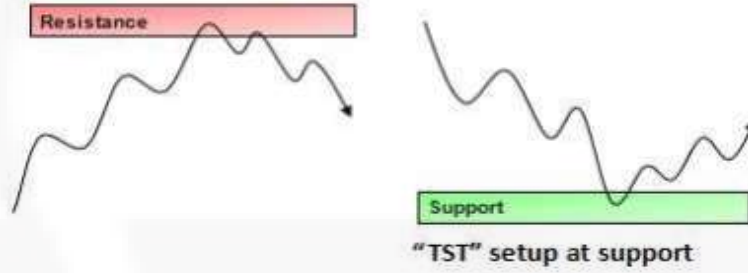


صفحه ۹۹

## Test Setup (TST)

Price tests an area of support or resistance but is unable to breach the area.

"TST" setup at resistance



"TST" setup at support

صفحه ۱۰۱



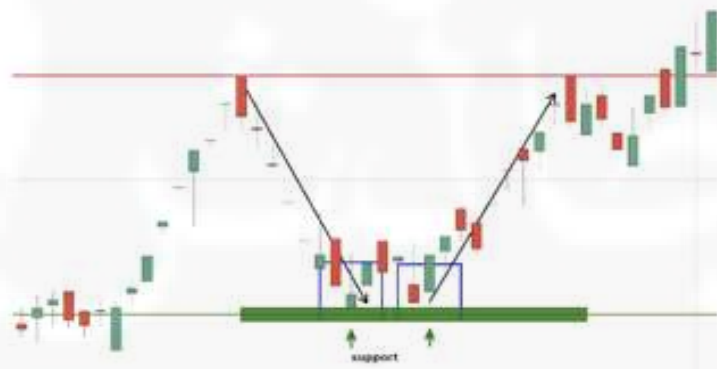
حمایت



مقاومت

صفحه ۱۰۲

# TST

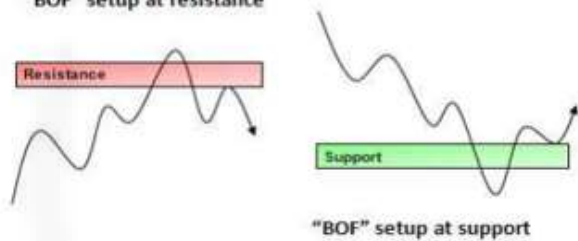


صفحه ۱۰۲

## Breakout Failure Setup (BOF)

Price breaches an area of support or resistance but is unable to continue the move, reversing back beyond the area of S/R.

"BOF" setup at resistance



"BOF" setup at support



در شکل زیر یک ستاپ BOF را مشاهده می کنید.

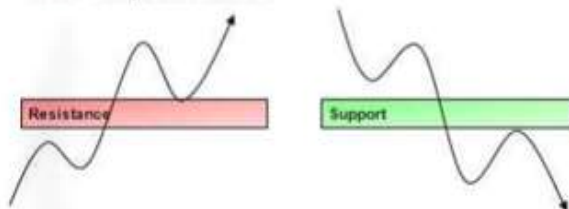


صفحه ۱۰۳

## Breakout Pullback Setup (BPB)

Price breaches an area of support or resistance and is able to hold beyond the area of S/R, after pulling back to retest.

"BPB" setup at resistance



"BPB" setup at support



در شکل زیر یک ستاپ BPB را مشاهده می کنید.

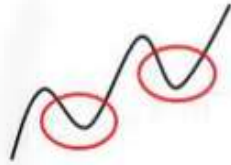


صفحه ۱۰۴

## Pullback Setup (PB)

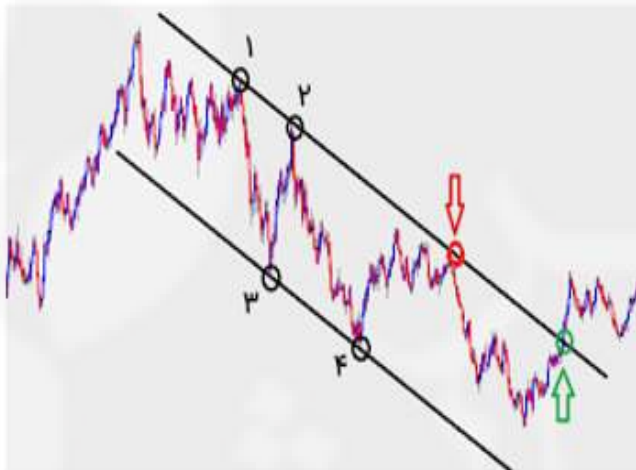
Price forms a simple (single-leg) correction within an existing trend.

"PB" setup in uptrend



"PB" setup in downtrend

نمونه یک ستاپ پولبک ساده بر روی چارت.

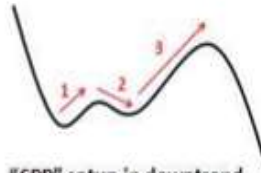


صفحه ۱۰۵

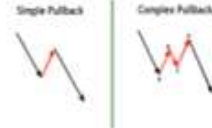
## Complex Pullback Setup (CPB)

Price forms a complex (multi-leg or extended duration) correction within an existing trend.

"CPB" setup in uptrend  
(3 swing retrace)



"CPB" setup in downtrend  
(3 swing retrace plus  
extended duration)



مقایسه پولبک ساده با پولبک پیچیده



صفحه ۱۰۶





صفحه ۱۰۷

فصل هفتم: مدیریت سرمایه





## فصل آخر

